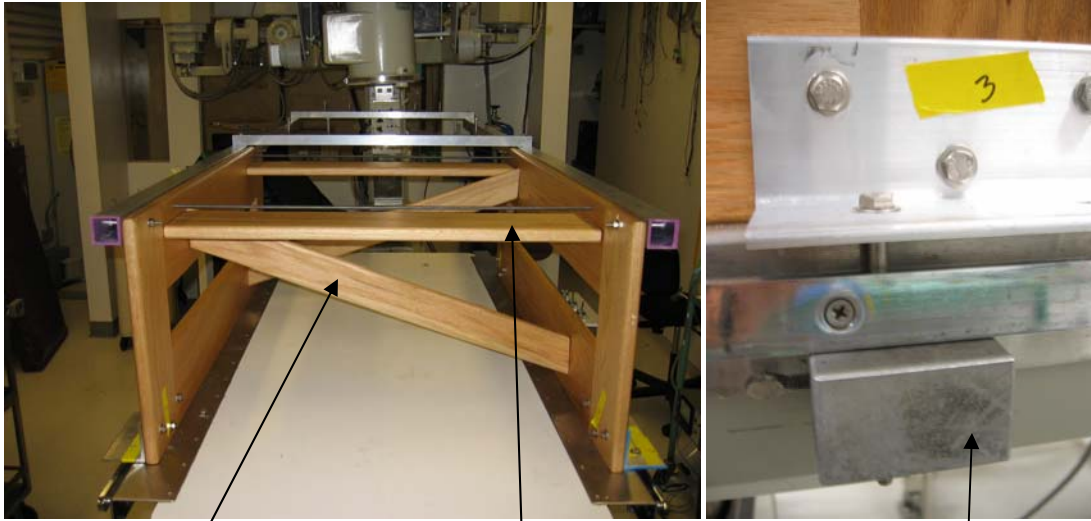


SLING SET-UP INSTRUCTIONS

1. **Rotate table 180 degrees** (the head portion is facing away from the x-ray tube)
2. **Reposition the table control box** to the side-rails near the wall cabinets before setting up the sling.
3. Position the **sides of the frame** along the edges of the table, **loosely bolting the L-brackets** to the table with the **4" long bolt and table clamp assembly**. The orientation of the frame is marked near the inside edge with **S=Starboard (Right) P=Port (Left)**.



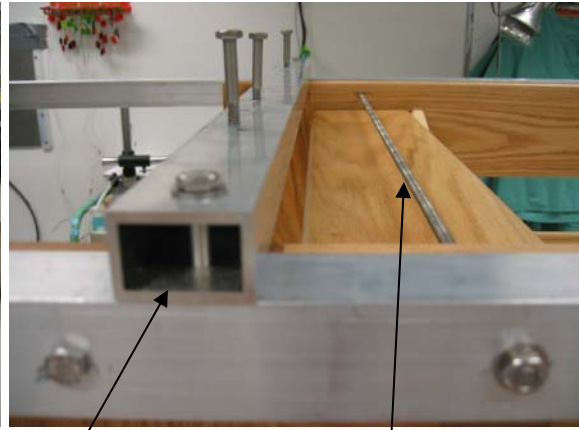
Diagonal SUPPORT bar

BRACE beam

ALUMINUM CLAMP

NOTE: all fittings must be loose in the beginning to facilitate the sling coming together at all the parts. Tighten down the bolts only AFTER the entire sling has come together.

4. Insert **brace beams** and the diagonal **support bars**. Loosely screw in the diagonal bars.
5. The **aluminum long beams** are labeled and attach on the **outside** of the frame with bolts.
6. Insert the long **threaded rods** through the frame and the aluminum beams and secure.



CROSS BARS

THREADED ROD

7. Attach the **aluminum cross bars** and bolt in place. The orientation is marked to ensure that the sling will lock in position.
8. Secure all bolts.
9. To facilitate placement of sling and subject into the frame, slightly rotate and lower the table before placement.





Sling Inventory

2 wooden frames with aluminum L-brackets
2 wooden perpendicular brace beams
2 wooden diagonal cross beams with hardware
2 long aluminum beams
2 aluminum cross beams with hardware
2 long threaded rods
4 aluminum table clamps
7/16" crescent wrench

large washers for table clamp assembly
4" long bolts for table clamp assembly
1/4-20 3" bolts, washers, nuts